



Schweizerische Eidgenossenschaft
Confédération suisse
Confederazione Svizzera
Confederaziun svizra

Embassy of Switzerland in Egypt
Office for International Cooperation

EBP



Potable Water Management Programme in Upper Egypt – Phase 2

PWMP Supply, Civil and Installation Works for Supply Network Rehabilitation in Al Soneya Ezba
Bidding Documents, Part 2: Employer's Requirements
15 May 2025

Contract No.
Credit Proposal No.

PWMP-12
7F-08374



برنامج إدارة
مياه الشرب
في الصعيد مصر

Project Team

EBP Schweiz AG (EBP), Lead
North South Exchange Consultants (NSCE), Consultant
United Consultants (UC), Sub-Consultant

EBP Schweiz AG
Mühlebachstrasse 11
8032 Zürich
Switzerland
Telephone +41 44 395 16 16
info@ebp.ch
www.ebp.ch/en

Print: 1. June 2025
PWMP-12_Employers Requirements_250515 EN.docx
Project number: 222346.00

Table of content

1.	Introduction	5
1.1	Background	5
1.2	Overview PWMP	5
1.3	PWMP Objectives and Content	6
2.	Project Overview PWMP-12	7
2.1	Locations	7
2.2	Services Required	7
2.3	Interfaces and Coordination	8
2.4	Project Organization	9
2.5	Time Schedule	10
2.6	Legal Requirements	11
3.	Technical Specifications	11
4.	Drawings	11
5.	Bill of Quantities (BoQ)	11

1. Introduction

1.1 Background

The Potable Water Management Programme (PWMP) in Upper Egypt, planned for implementation from 2018 to 2027, intends to improve service provision of potable water, with a focus on Upper Egypt Governorates and the Water and Wastewater Companies (WWCs) serving these governorates. PWMP Phase 2 (from 2022 to 2025) is focusing on poor neighborhoods in Aswan. PWMP is funded by the Swiss government and implemented by a Swiss-Egyptian team in close collaboration with the Aswan Water Supply Company (AWSC) and the target communities.

1.2 Overview PWMP

PWMP Phase 2 will focus on the Aswan Water and Sanitation Company and poor neighborhoods in the city of Aswan (i.e. El Sail area, with optional expansion to El Zaydab Qebly and Ezab Kima area), close to the neighborhood of Khor Awada which was targeted with PWMP Phase 1 from 2019 to 2022, and to El Nasriya which was in the focus of a previous single-phase project from 2012 to 2016.

To ensure reliable potable water service provision by Aswan Water and Sanitation Company (AWSC) as well as to provide equal access to a potable water supply system for inhabitants in the target area of Ezab Kima the current potable water distribution network shall be replaced and separated into DMAs.



Figure 1: Neighborhoods in Aswan city, Al Sail and Zaydab Bahary are the priority target areas by PWMP Project Phase 2

1.3 PWMP Objectives and Content

The objective of the PWMP is to rehabilitate and extend the current drinking water infrastructure to serve Ezab Kima. The population shall be served to the target year of 2055 (design horizon).

The scope of the PWMP drinking water rehabilitation project is divided into infrastructures packages for supply network rehabilitation and the construction of a transmission main. The supply network rehabilitation in el Sail (PWMP-10) as well as the transmission main (PWMP-11) are currently under construction. In addition, supply network rehabilitation in Ezab Kima (PWMP-12) shall be implemented.

2. Project Overview PWMP-12

2.1 Locations

The Project is in the target area of Ezab Kima. The Project is geographically separated into a district metered area (DMA) according to the following table:

Package	Description
PWMP-12: Supply Net- work	Supply, civil and installation works for the rehabilitation and extension of the supply network in the target areas, including house connections and decommissioning of the old network, etc. for the following DMA: — Al Soneya

The Project includes the replacement of the outdated water supply network by a new supply network with the following characteristics:

- Total pipe length of about 8 km
- Construction of new house connections
- Hydraulically separated into a DMA
- Feeding points are from the new transmission main (PWMP-11)
- Decommissioning of old network

Most of the pipe laying and related works will be with open trenches and only in exceptional circumstances horizontal directional drilling may be used.

The detailed instructions are given in the technical specifications (see chapter 3), the drawings (see chapter 4) and the Bill of Quantities (BoQ, see chapter 5).

2.2 Services Required

The services required under the Project are the supply, civil and installation works for the replacement of the water supply network including house connections and decommissioning of the old network. In the course of the implementation period additional households will register their house connection at AWSC; all newly registered house connections will have to be connected by the Contractor during the implementation period. Furthermore, the Contractor has to provide and implement any additional investigations (topographic & geotechnical), design changes, workshop drawings, and as-built drawings / documentation as described in the technical specifications and detailed design in chapters 3, 4 and 5.

The Contractor must provide the following services amongst others:

- all written communication must be in English and Arabic
- project logistics, incl. professional oral and written translation as needed
- project management, incl. quality management (works, documents, health & safety, environment, etc.), financial management and project accounting

- manage and supervise three construction sites that are fully operational (fully staffed and equipped) at all times over the implementation period
- preparation for and attendance at all meetings incl. weekly construction meetings, monthly progress meetings and coordination meetings with other contractors, public information events and any other meetings required for the implementation of the Project
- coordination with all project partners, the public, other stakeholders such as electricity, telephone and gas companies, and other contractors
- health and safety measures, site clearance, and adequate disposal of waste and excess material (acc. pertinent laws)
- installation of project information panels at each the construction site (panel size (area) of approx. 2.5 m x 2.5 m)
- obtaining all necessary approvals by the Supervisor (PWMP Consultant) prior to execution of the works (including any changes, installation of trench protection, surveying works, pipe bedding, pipe laying, testing, backfilling & compaction in layers, reinforcement, formwork installation and removal, concreting)
- packing, shipping / transport and import of equipment incl. checking of readiness for shipping, custom clearance and reception control
- transportation, accommodation and catering of Contractor's staff and labor
- ensuring timely elaboration of documents required for permitting (e.g. environmental impact assessment, technical review of final design) as well as coordination and timely requesting of all necessary permits including intensive contact / follow-up with the relevant stakeholders (Ministries, Governorate, etc.) in order to timely obtain all permits
- full project documentation (with regular data backups) and in the format required for AWSC to import in their network information system (NIS) / GIS system
- quick correction of any deficiencies and defects.

2.3 Interfaces and Coordination

In Figure 1 and the drawings (see chapter 4) the perimeter of PWMP-12 (boundary of target area) is shown.

The detailed interfaces are shown in the drawings. The coordination of the works with the other contractors and with AWSC is in the responsibility of the Contractor. Any potential conflicts and the proposed countermeasures must be notified immediately to the Supervision (PWMP Consultant / Engineer) and discussed during the coordination meetings that will take place in addition to weekly construction meetings.

The complete outside house connections must be replaced, i.e. until the pipe enters the building. The Contractor must make an inventory of the required fittings for the house connections. The Contractor must supply and install the new house connections. The Contractor must prepare a testing, commissioning (new network) and decommissioning (old network) concept for

approval by Supervision (PWMP Consultant / Engineer). Only after the new network is operational the Contractor shall connect the new house connection and take the old house connection out of operation. The Contractor must protect the new house connections from damage / vandalism until the reconnection can be completed.

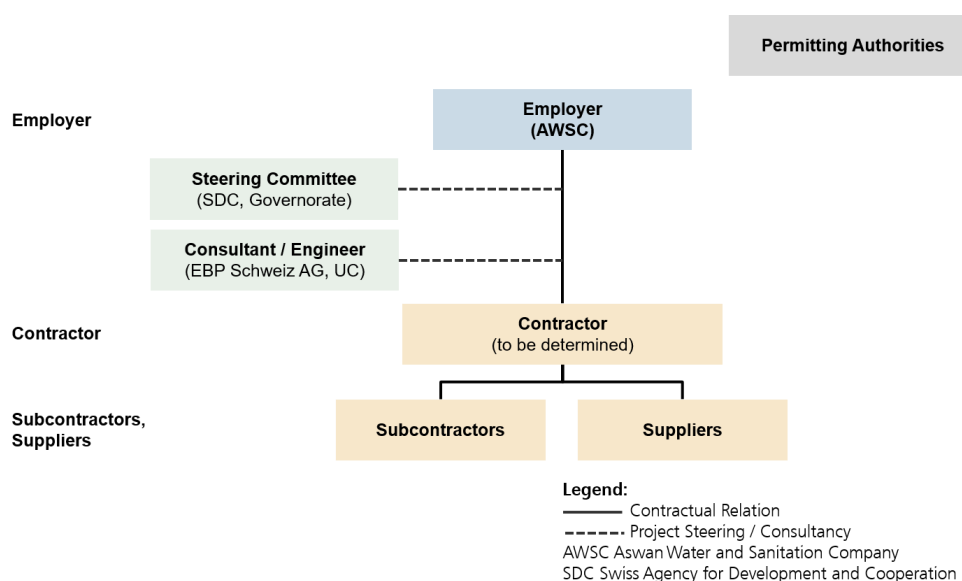
The Contractor must study the water / sewage / electricity / gas / etc. lines intersecting with the project lines and work the necessary protections to avoid any conflicts between the Project and these lines. Therefore, the Contractor shall submit the drawings with any required modifications to the Employer (AWSC) and Supervision (PWMP Consultant / Engineer) for review and approval before implementation.

All information provided in the Bidding Documents shall not be used without critical review by the Contractor. This includes all geotechnical recommendations that are informative, i.e. the Bidder / Contractor is responsible to assess the geotechnical data and decide and propose an appropriate solution. Any reservations shall be explicitly expressed in the Bid and the proposed changes shall be discussed / justified in the Bid (use Form K, List of Deviations, Section IV). After contract signing no compensation is provided for information that was available during bidding, unless reservations were made in Form K (List of Deviations, Section IV) of the Bidding documents.

The Contractor will have to verify and complete as deemed necessary all the information in the Bidding Documents for the detailed design and prior to start of the works. All related cost for the verification and completion must be included in the Bid / Contract Price.

2.4 Project Organization

In the figure below, the organization for the implementation of the Project is given.



Aswan Water and Sanitation Company (AWSC) is the Employer (also client, owner, beneficiary) and is signing the Contract with the Contractor. AWSC is supported by the PWMP Consultant / Engineer (EBP, UC) in supervising

the Contractor and in informing the Steering Committee. The PWMP Consultant acts as Project Manager in accordance with the Contract and is responsible for supervision of the Contractor's works, Contract administration and the administration of the funds and disbursements.

The Project will be implemented by one Contractor, who forms a team by associating with subcontractors and suppliers as deemed necessary. Joint-Ventures and Associations are not permitted. The Contractor may participate in any capacity whatsoever in only one bid. All sub-contractors and suppliers must be specified (in Bid and Contract) and can only be replaced after approval by the Project Manager. The Contractor must ensure to have all required specialists (geology, statics, surveying, workshop drawings and as-built drawings, etc.) in his team for the implementation of all facilities and the provision of all services required under the Contract.

2.5 Time Schedule

The time schedule for the implementation of the Project is shown in the following figure.

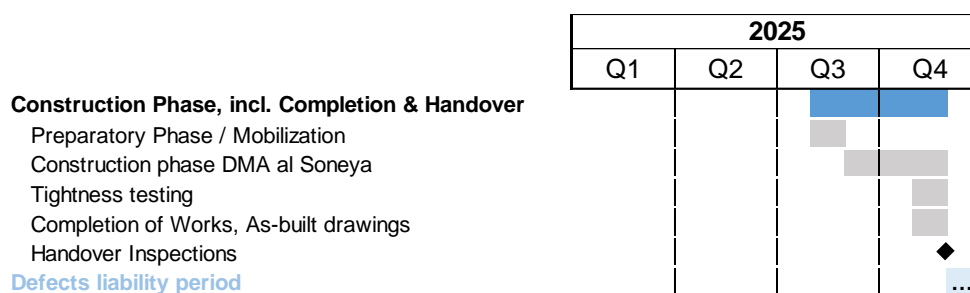


Figure 2: Implementation Schedule for the Project

The Intended Completion Date for the whole of the Works shall be no later than 15 December 2025 (Contract, clause 1.1). The Contract specifies Intended Completion Dates (handover & commissioning) for each DMA and corresponding delay penalties if the Contractor fails to timely implement the Works within each phase.

The Contractor must prepare a detailed time schedule ("Program for the Works" in accordance with the Contract, clause 25) as part of the bid that will have to be discussed on weekly construction meetings with the Supervision. The time schedule must contain completion milestones (such as for excavation, delivery of goods, civil construction, installation works, any water cuts, testing, finishing, and handover inspection).

Only after the new network is operational, the Contractor shall connect the new house connections and take the old house connections out of operation. A Handover Certificate may be requested after completion of each phase / DMA. A final Certificate of Completion according to Contract clause 52 will be issued after all works and the house connections for newly registered households are completed and handed over to AWSC.

The Project Manager may suspend the construction activities immediately, if the construction site is not compliant with the requirements under the Contract, e.g. non-compliance health and safety standards, absence of key

personnel such as the site managers, lack of most recent approved design documentation / drawings on site, etc. Any delays resulting from such suspension are entirely in the responsibility of the Contractor and are not subject to any compensation under the Contract.

2.6 Legal Requirements

All services, facilities and works provided under the Project must fully comply with the applicable Egyptian regulations, norms and standards. If there are no or no sufficiently specific Egyptian regulations, norms and standards, the applicable EU regulations, norms and standards shall be applied as guidelines, including ISO norms. The Bidder / Contractor is responsible to study, to make himself familiar, and to apply as deemed necessary the applicable regulatory framework and standards. This also applies to health and safety requirements. The international transports of goods and equipment must comply with the pertinent regulation and standards of the countries on the transport route. Deviations from the applicable regulations, norms and standards must be explicitly stated and justified in the Bid.

3. Technical Specifications

See separate documents

4. Drawings

See separate documents

5. Bill of Quantities (BoQ)

The Bidder must complete the entire BoQ.

See separate documents